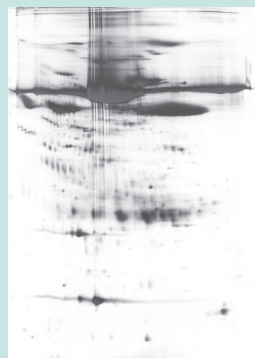


## Proteome Analysis by Extreme High Resolution 2D Electrophoresis

### Suitable for samples with physiological relevance

- Target identification
- Biomarker identification
- Surrogate marker identification
- Differential protein pattern analysis
- Drug mechanism of action
- Predictive toxicology



CSF w/o abundant protein depletion

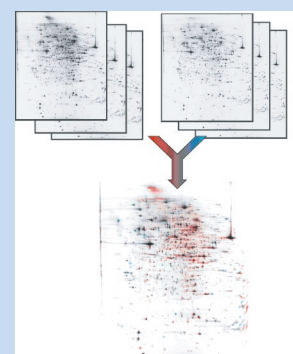


CSF with abundant protein depletion

## Proteomics 2D pilot study for plasma, serum and CSF

### Six samples - 3 x control vs. 3 x modified / diseased sample

- Including**
- sample preparation
  - depletion of high abundant serum proteins
  - 6x extreme high resolution 2D electrophoresis (23 x 30 cm)
  - MS compatible silver / fluorescent staining
  - differential 2DE image analysis
  - result report of differential protein spots



### Special Price: 3450 EURO

[on request (optional): protein identification]

## Sample requirements for plasma, serum and CSF

- >2.5-5 ml CSF / > 50 µl serum or plasma

**CONTACT YOUR PROTEOMICS SPECIALIST AT:**

**[service@proteomefactory.com](mailto:service@proteomefactory.com)**